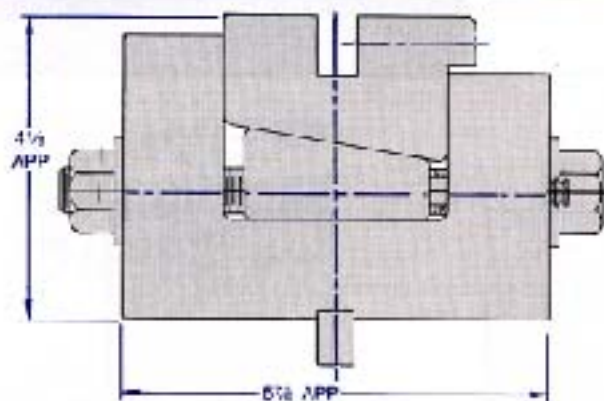


PRESS BED DEFLECTION COMPENSATOR



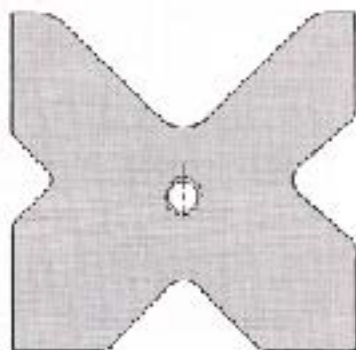
Shimming dies to get true consistent bends is no longer necessary. This problem is solved by the Press Bed Deflection Compensator. This patented compensator uses a series of wedges under a floating upper holder. The wedges are adjusted by a turn of a screw to give a maximum crown of .090.

In a like manner, a true full length bend can be achieved on older, worn presses by using the wedges to compensate for the low spots in the machine.

Multi-station operations are also possible by using the wedges to compensate for slight variations in shut height and/or tonnage. Crown indicators make it possible for your operator to "eye ball" the amount of crown necessary. Each turn of the adjusting screw creates .010 crown which is represented by one ring on the crown indicator.

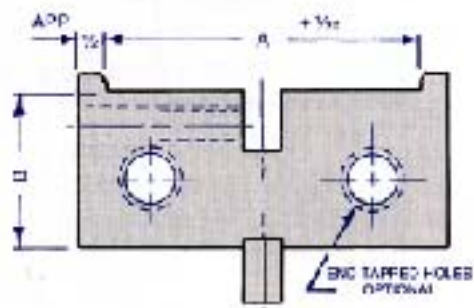
FOUR WAY DIES

Note:
Openings less than 1" are normally made 90°.
Openings 1" and over are normally made 85°.



Die No.	Block Size	4 Die Openings			
4W 1	2.25	.50	.75	1.00	1.25
4W 2	2.75	.625	.875	1.125	1.50
4W 3	3.25	.75	1.00	1.50	2.00
4W 4	3.75	.875	1.125	2.00	2.50
4W 5	4.25	1.00	1.50	2.00	3.00
4W 6	4.75	1.00	1.25	2.50	3.00
4W 7	5.25	1.00	2.00	3.00	4.00
4W 8	5.75	1.25	2.00	3.00	4.00
4W 9	6.75	2.00	3.00	4.00	5.00
4W 10	7.75	2.00	3.00	4.00	5.00
4W 11	10.00	2.00	4.00	6.00	8.00
4W 12	12.00	3.00	4.00	6.00	10.00

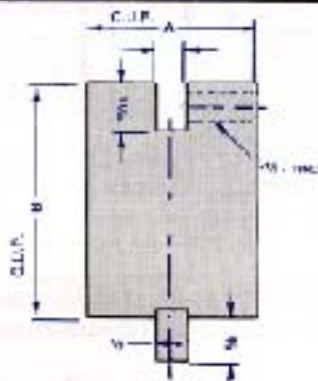
THREE AND FOUR WAY COMBINATION DIE HOLDERS



NO.	A	B
DH2 A	2 1/4	3 1/2
DH2 B	2 1/4	5
DH2 C	2 1/4	3 1/2
DH2 D	2 1/4	5
DH2 E	3 1/4	3 1/2
DH2 F	3 1/4	5
DH2 G	3 1/4	3 1/2
DH2 H	3 1/4	5
DH2 I	4 1/4	3 1/2
DH2 J	4 1/4	5

NO.	A	B
DH2 K	4 1/4	3 1/2
DH2 L	4 1/4	5
DH2 M	5 1/4	3 1/2
DH2 N	5 1/4	5
DH2 O	6 1/4	3 1/2
DH2 P	5 1/4	5
DH2 R	6 1/4	3 1/2
DH2 S	7 1/4	3 1/2
DH2 T	10	3 1/2
DH2 U	12	3 1/2

CONVENTIONAL DIE HOLDERS



Any Die holder 4" high or over can be furnished with half moon burnouts for mounting.

NO.	A	B
CDH A	2	1 1/2
CDH B	2	2
CDH C	2	3
CDH D	2	4
CDH E	2	5
CDH F	3	1 1/2
CDH G	3	2
CDH H	3	3
CDH I	3	4

NO.	A	B
CDH J	3	5
CDH K	4	2
CDH L	4	3
CDH M	4	4
CDH N	4	5
CDH O	5	2
CDH P	5	3
CDH R	5	4
CDH S	5	5